

Implementing optimal stewardship strategies to combat antibiotic resistance



Disclaimer

- *Unapproved products or unapproved uses of approved products may be discussed by the faculty; these situations may reflect the approval status in one or more jurisdictions*
- *The presenting faculty have been advised by touchIME to ensure that they disclose any such references made to unlabelled or unapproved use*
- *No endorsement by touchIME of any unapproved products or unapproved uses is either made or implied by mention of these products or uses in touchIME activities*
- *touchIME accepts no responsibility for errors or omissions*

Effective MDT management for infection control

Dr Esmita Charani

Senior Lead Research Pharmacist
Imperial College London
London, UK





**Why is a multidisciplinary
team approach needed for
antimicrobial stewardship?**

An expert MDT is needed to implement an AMS

AMS focus: prevention, diagnosis and treatment of infection¹

Core MDT*

- Consultant microbiologist^{1,2}
- Infectious diseases specialist^{1,2}
- Acute care physician²
- Surgeon²
- Senior member of the pharmacy management team^{1,2}
- Anaesthetist²
- Paediatrician²
- Senior nurse^{2,3}
- Primary care representative^{2,3}
- IT experts¹
- Local authorities³

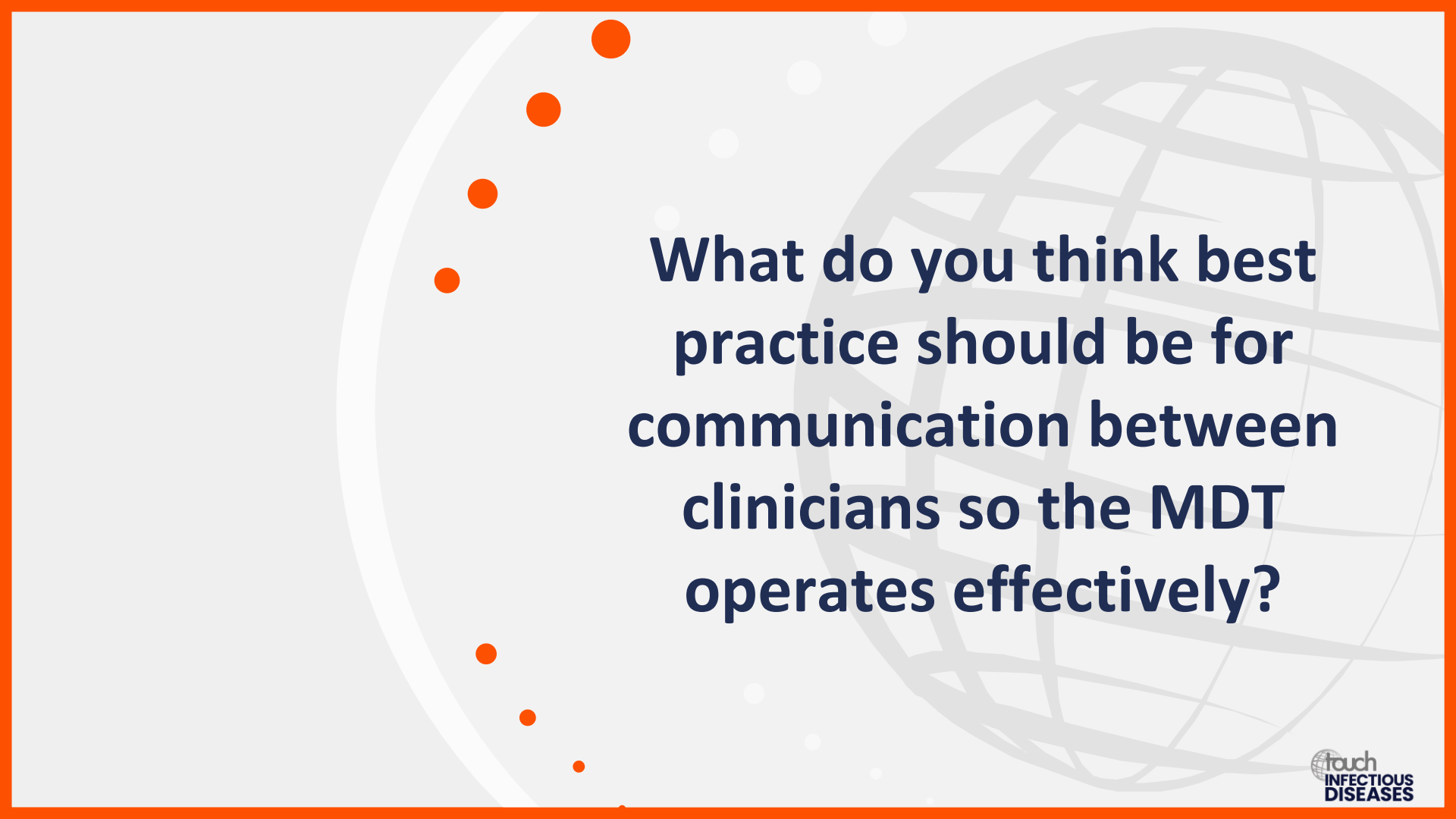
Key roles⁴

- Leadership
- Accountability & responsibilities
- Monitoring
- Reporting
- Education & training
- AMS actions

*In resource-limited settings or small hospitals, the MDT may comprise less specialized practitioners, such as GPs and non-clinical pharmacists.¹

AMS, antimicrobial stewardship; GP, general practitioner; IT, information technology; MDT, multidisciplinary team.

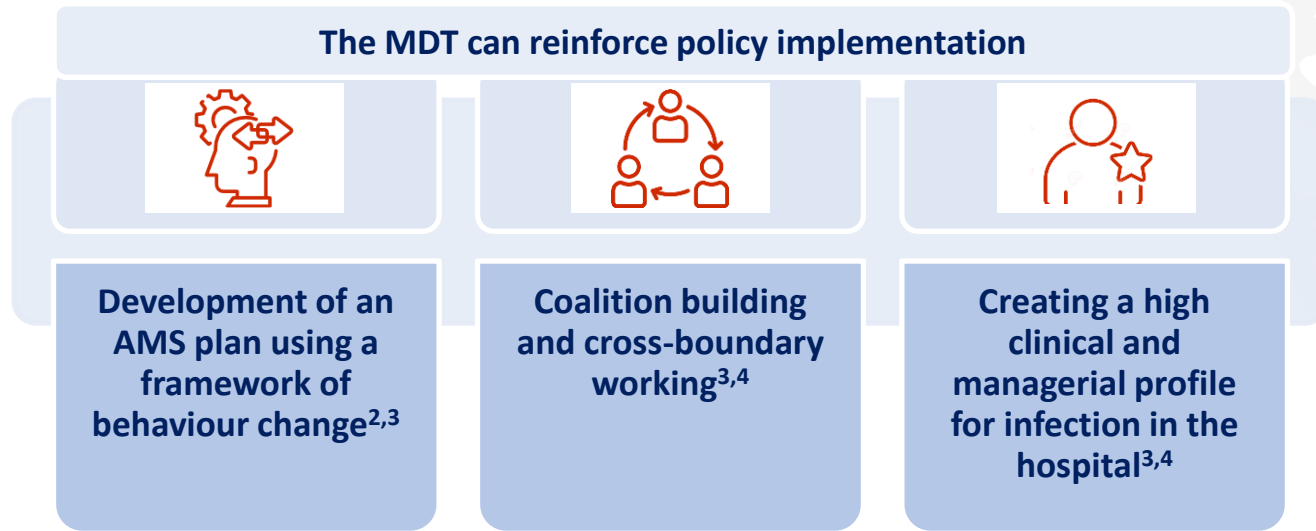
1. Mendelson M, et al. *Clin Microbiol Infect.* 2020;26:447–53; 2. Public Health England 2015. Antimicrobial stewardship toolkit for English hospitals. Available at: https://assets.publishing.service.gov.uk/government/uploads/system/uploads/attachment_data/file/417032/Start_Smart_Then_Focus_FINAL.PDF (accessed 14 January 2022); 3. Alividza V. *Nurs Times.* 2017;113:22–5; 4. WHO 2019. Antimicrobial stewardship. Available at: www.who.int/publications-detail-redirect/9789241515481 (accessed 14 January 2022).



What do you think best practice should be for communication between clinicians so the MDT operates effectively?

Organizational strategies are essential to ensure successful operation of the MDT

A clinical leader must be identified from the core MDT^{1,2}



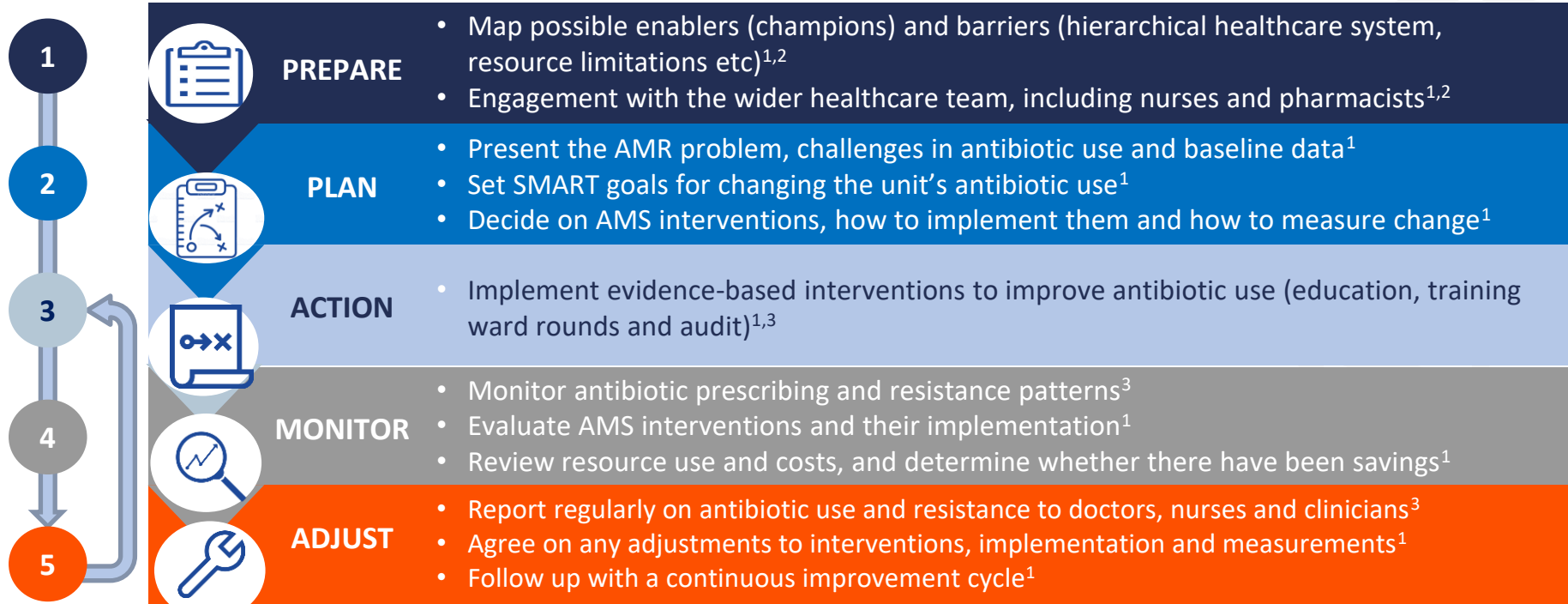
AMS, antimicrobial stewardship; MDT, multidisciplinary team.

1. Mendelson M, et al. *Clin Microbiol Infect.* 2020;26:447–53; 2. Gregory JR, et al. *US Pharm.* 2018;43:HS-7-HS-12;
3. Murray E, Holmes A. *J Antimicrob Chemother.* 2012;67(Suppl 1):i29–36; 4. Kpokiri EE, et al. *Antibiotics.* 2020;9:204.



How can clinicians in different countries with different cultures and resources implement an MDT approach to combat antibiotic resistance?

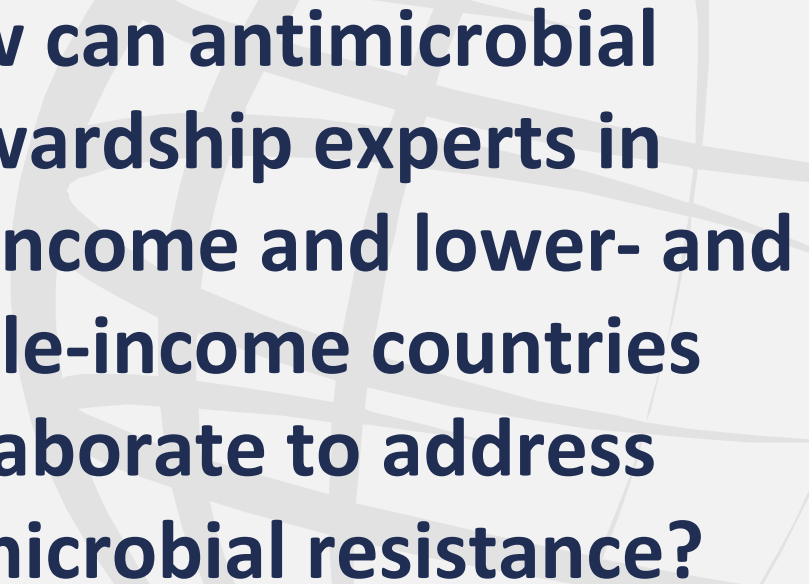
Establishing and measuring success of MDT AMS plan



AMR, antimicrobial resistance; AMS, antimicrobial stewardship; MDT, multidisciplinary team; SMART, specific, measurable, achievable, relevant, timebound.

1. WHO 2019. Antimicrobial stewardship. Available at: www.who.int/publications-detail-redirect/9789241515481 (accessed 14 January 2022);

2. Charani E, et al. *PLoS One*. 2019;14:e0209847; 3. Gregory JR, et al. *US Pharm*. 2018;43:HS-7-HS-12.



How can antimicrobial stewardship experts in higher-income and lower- and middle-income countries collaborate to address antimicrobial resistance?

Key factors for implementing AMS programmes



Political commitment and leadership are critical to implement an AMS agenda and provide resources¹



Global research and development is required on best practices in agriculture, the development of antimicrobials and diagnostic methods²



Improved access to antimicrobial agents is required in middle- and low-income countries³



Global, multi-stakeholder agreement is needed to coordinate resource, engage stakeholders and secure binding commitment for action²

AMS, antimicrobial stewardship.

1. WHO 2018. Tackling antimicrobial resistance (AMR) together. Available at: www.who.int/antimicrobial-resistance/publications/Tackling-AMR-multisectoral-coordination-june2018.pdf?ua=1 (accessed 14 January 2022); 2. IACG 2018. Available at: www.who.int/antimicrobial-resistance/interagency-coordination-group/IACG_Future_global_governance_for_AMR_120718.pdf (accessed 14 January 2022); 3. Charani E, et al. *PLoS One*. 2019;14:e0209847.



Individualizing patient care for antibiotic-resistant infections

Prof. Antoni Torres

Professor of Pulmonology and Critical
Care
University of Barcelona
Spain



The background of the slide features a large, faint globe with a grid of latitude and longitude lines. To the left of the globe, there is a white circular arc that forms part of a larger circle. Along this arc, several orange dots are scattered, some larger than others, creating a path-like effect. The overall color scheme is light gray and white, with orange accents.

**What approach should
be used for diagnosing
microbial infections?**

Diagnostic tools for microbial infections

General clinical signs and symptoms

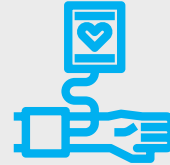
Systemic



Peripheral



Vital signs

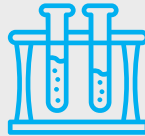


Changes in laboratory markers

Haematology



Biochemistry

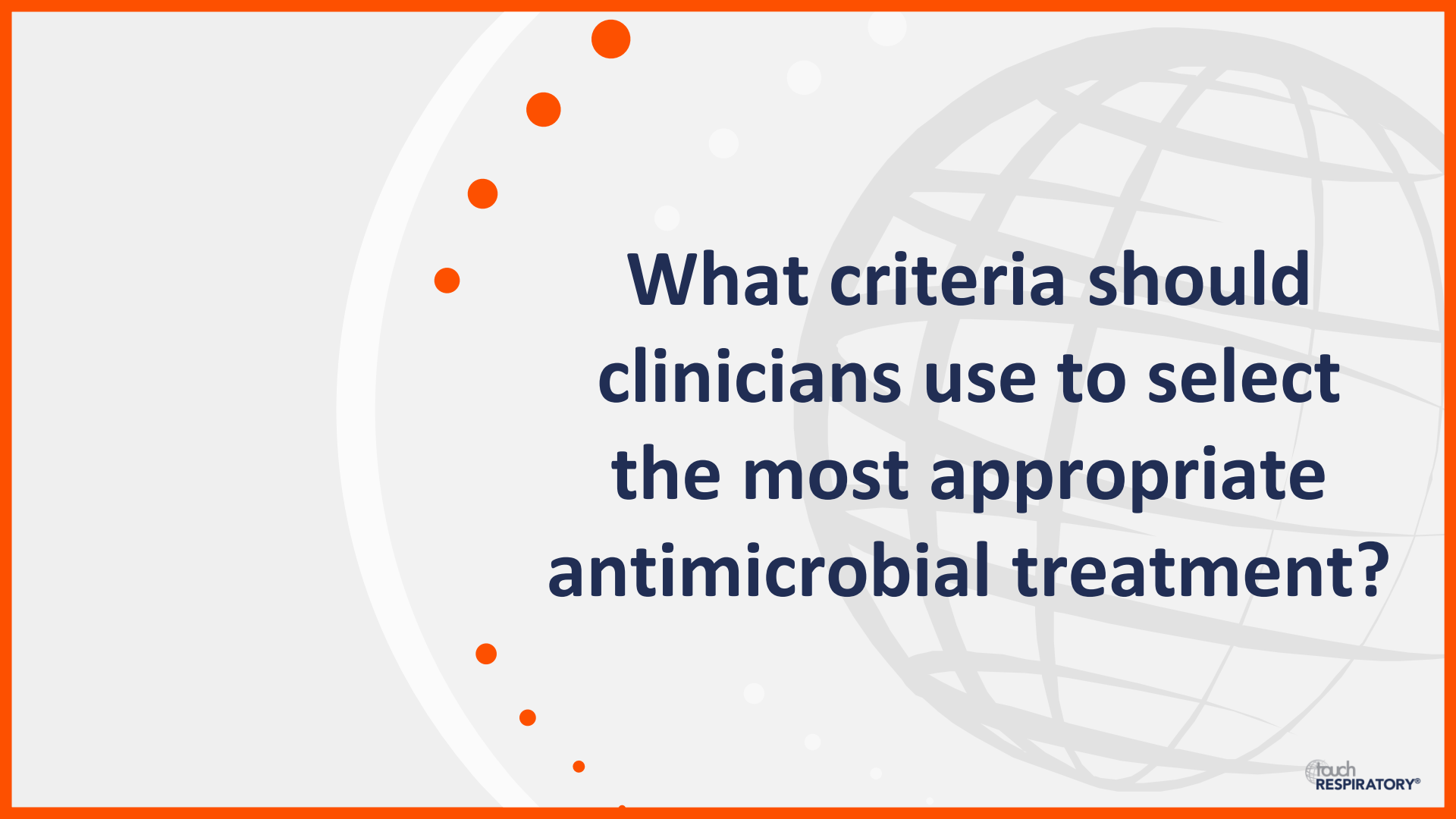


Urinalysis



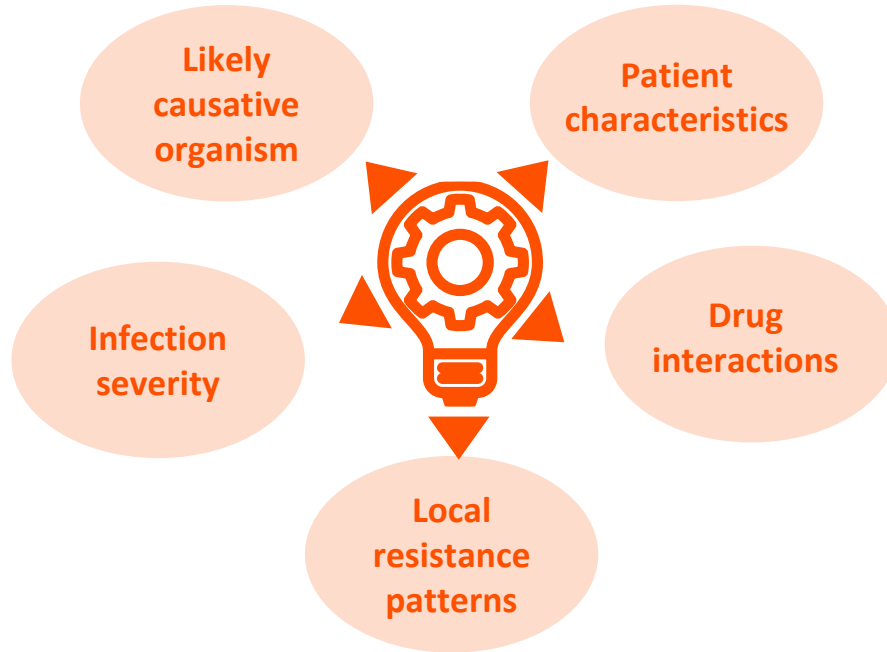
Microbiology



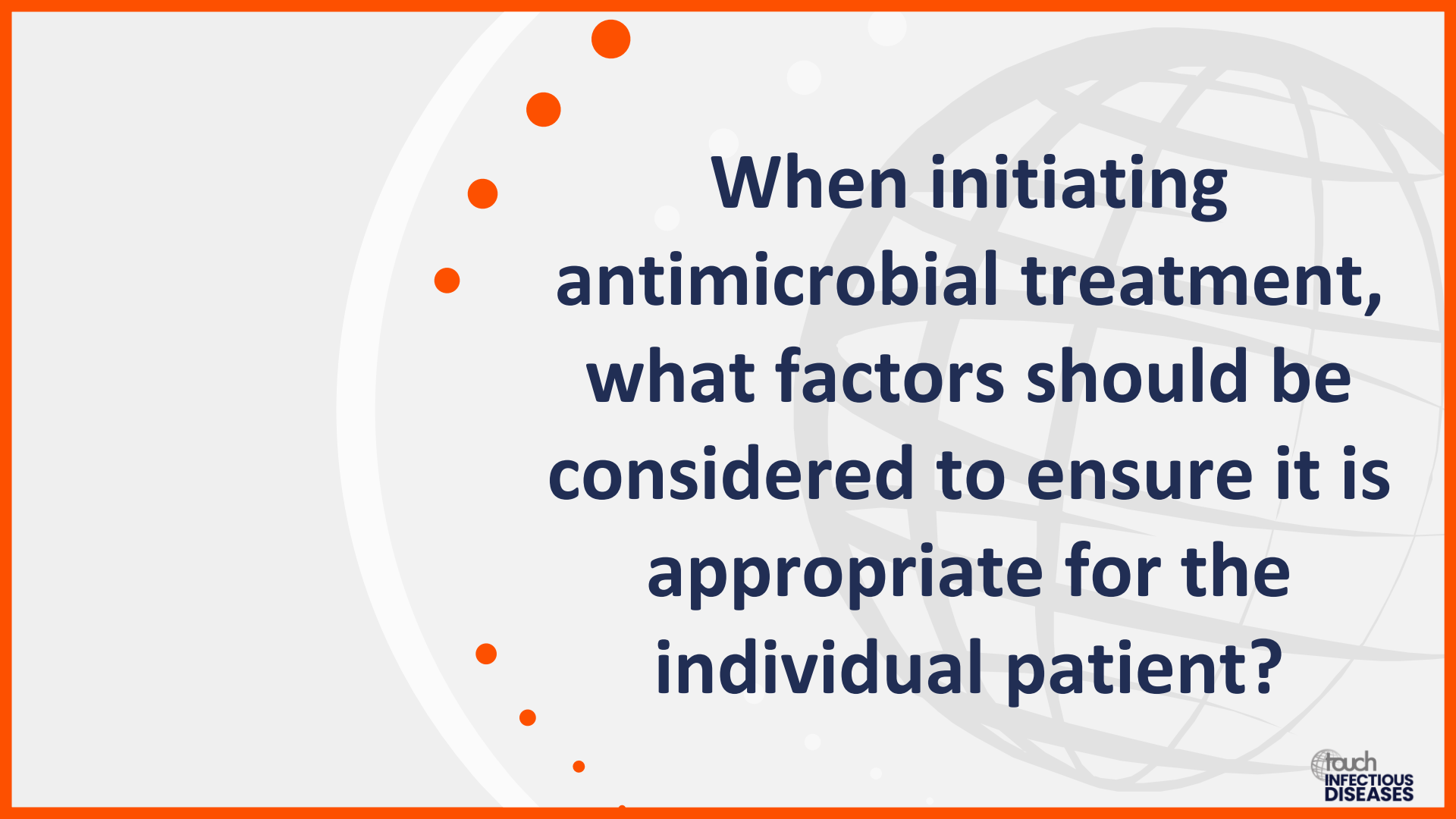
The background of the slide features a large, light gray globe with a grid of latitude and longitude lines. To the left of the globe, there is a vertical line of seven orange dots of varying sizes, arranged in a slightly curved pattern. The entire slide is framed by a solid orange border.

**What criteria should
clinicians use to select
the most appropriate
antimicrobial treatment?**

Factors guiding antimicrobial treatment choice

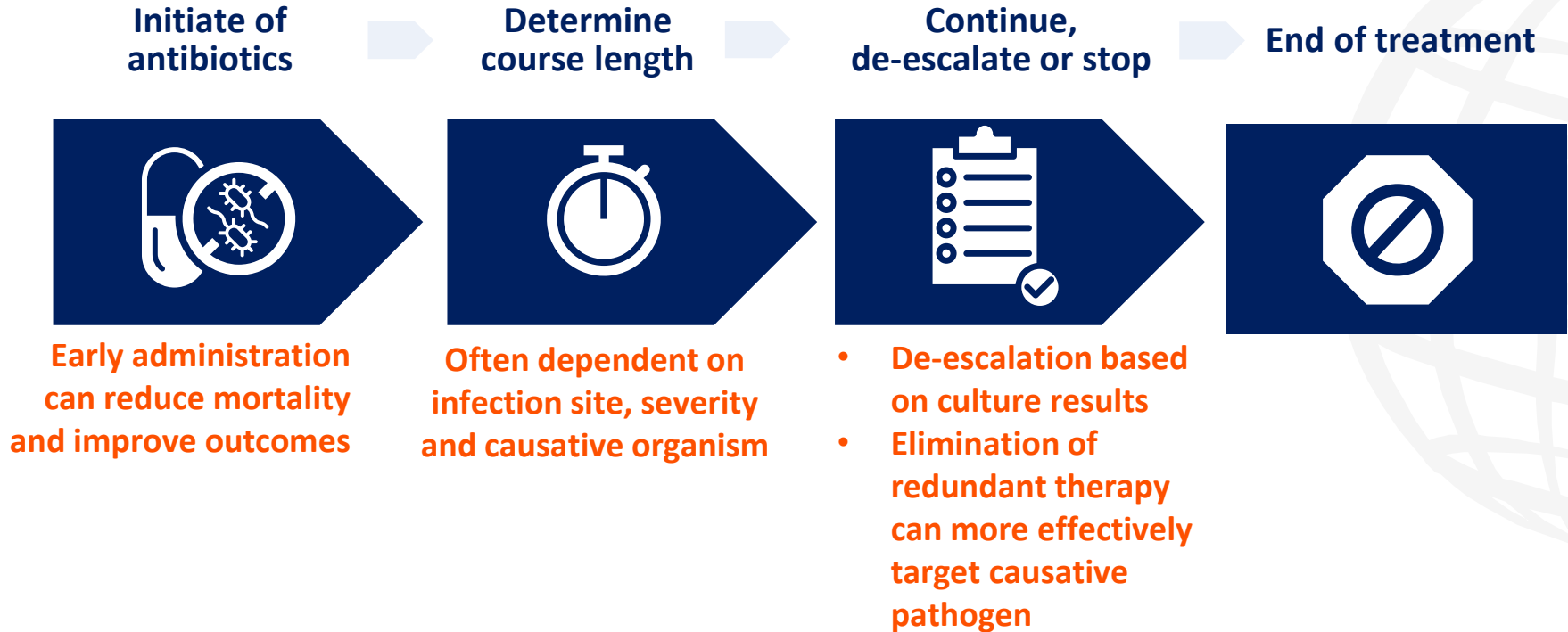


Guidelines on common infections should be used as a reference by prescribers when choosing an antimicrobial therapy



When initiating antimicrobial treatment, what factors should be considered to ensure it is appropriate for the individual patient?

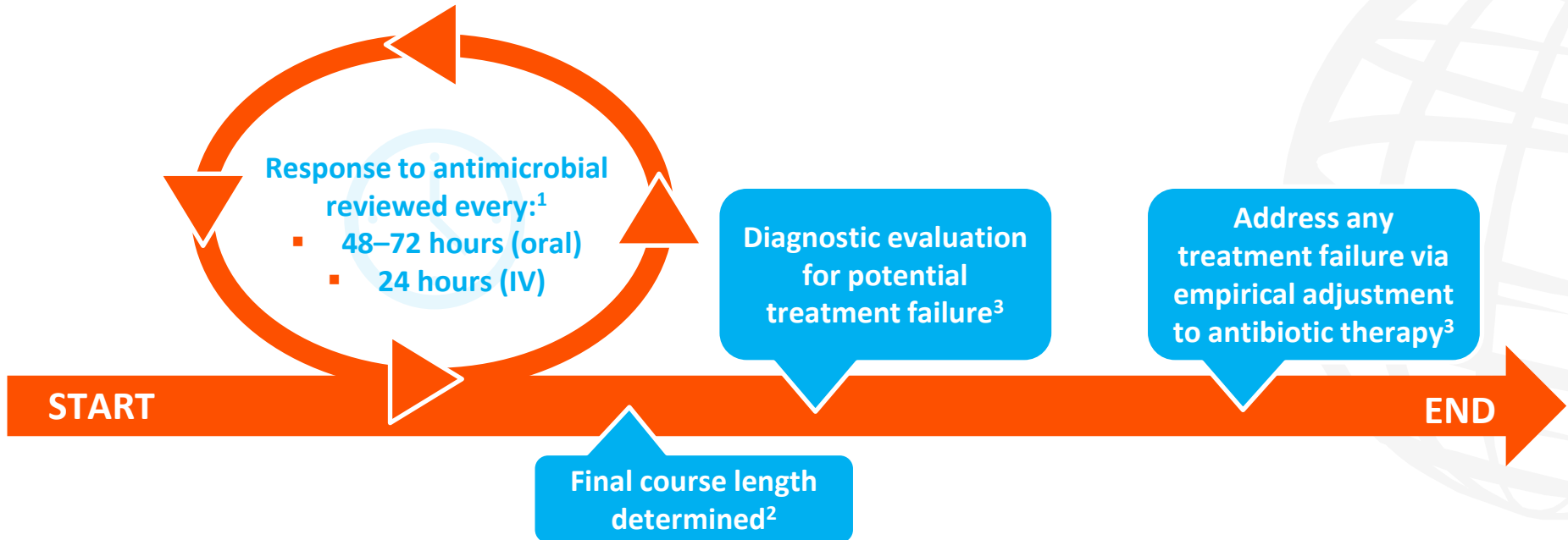
Timeline of antimicrobial therapy



The background of the slide features a large, faint globe with a grid of latitude and longitude lines. To the left of the globe, there is a vertical line of orange dots of varying sizes, with a larger white dot at the top. The entire slide is framed by a thick orange border.

**How should patients
receiving antimicrobial
treatment be
monitored?**

Recommendations for monitoring patients receiving antimicrobial treatment



IV, intravenous.

1. Jethwa S. 2016. Available from <https://pharmaceutical-journal.com/article/ld/principles-of-initiating-antimicrobial-therapy-and-empiric-prescribing> (accessed 31 January 2022);

2. Public Health England. 2015. Available from: www.gov.uk/government/publications/antimicrobial-stewardship-start-smart-then-focus (accessed 31 January 2022);

3. Bassetti M, et al. *Intensive Care Med.* 2018;44:73–5.



New and emerging management options for antibiotic-resistant infections

Prof. Ignacio Martin-Loeches

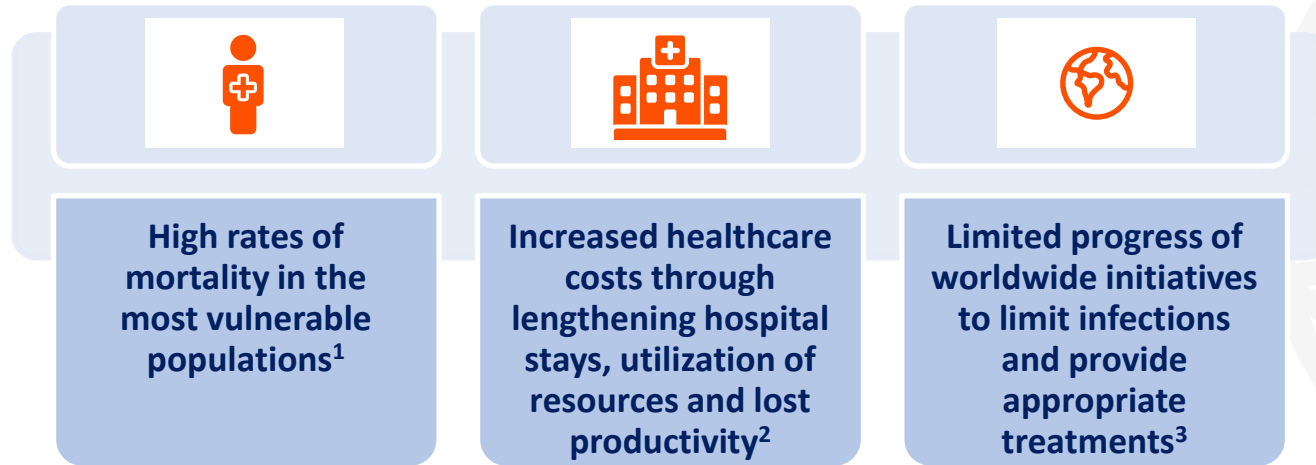
Professor in Intensive Care Medicine
Trinity College, Dublin, Ireland





**Why are new
management options
for antibiotic-resistant
infections needed?**

New management options are needed for multi- and extensively-drug resistant bacteria

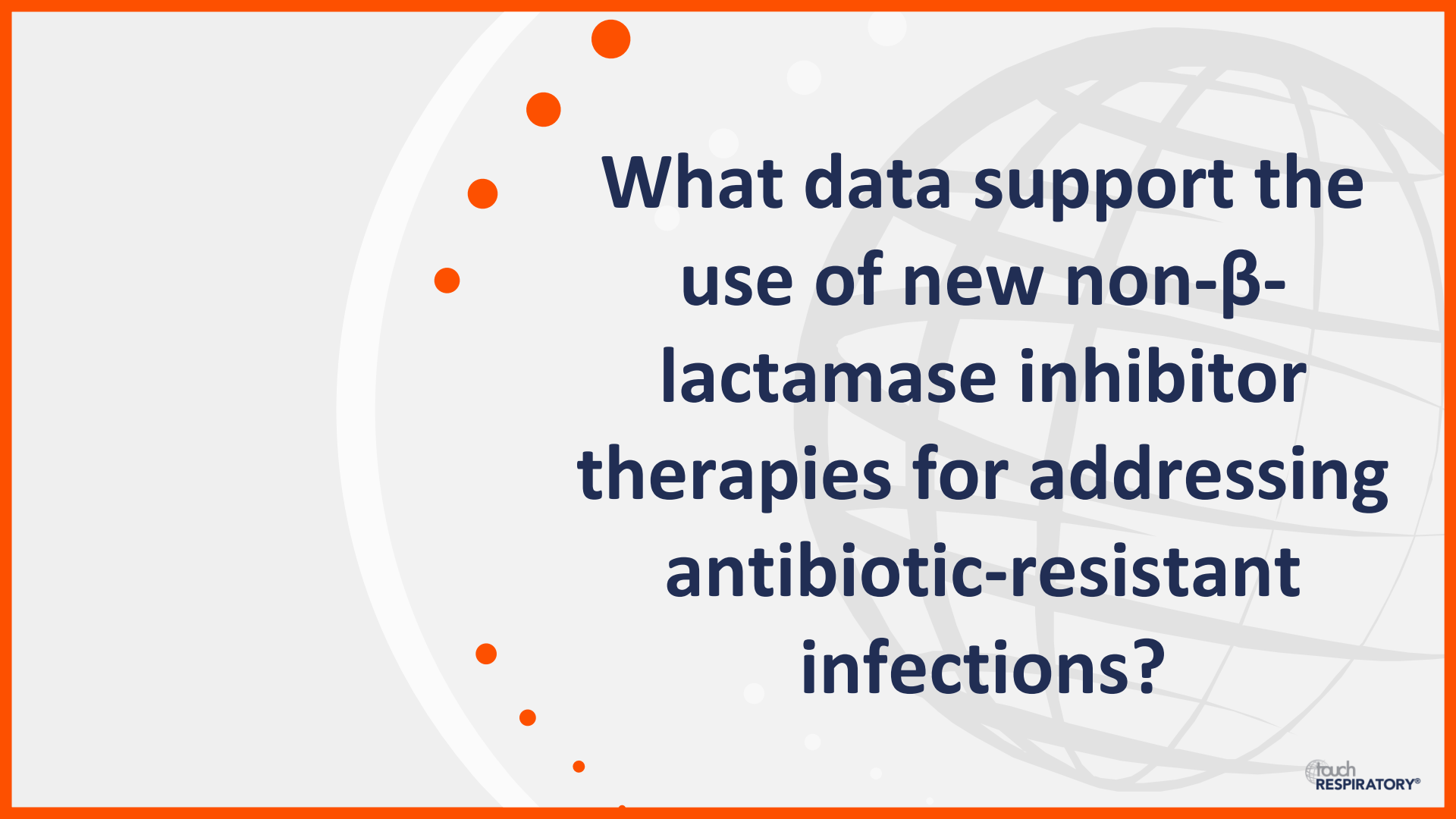


Evidence-based AMS programmes help to address these challenges

AMS, antimicrobial stewardship.

1. Cassini A, et al. *Lancet Infect Dis*. 2019;19:56–66; 2. Naylor NR, et al. *Antimicrob Resist Infect Control*. 2018;25:58;

3. WHO 2019. Available from: www.who.int/docs/default-source/documents/no-time-to-wait-securing-the-future-from-drug-resistant-infections-en.pdf?sfvrsn=5b424d7_6 (accessed 18 January 2022).



What data support the use of new non- β -lactamase inhibitor therapies for addressing antibiotic-resistant infections?

Non- β -lactamase inhibitors can be effective for the treatment of several types of infection

Plazomicin

- The phase III EPIC study in cUTIs, including acute pyelonephritis, reported plazomicin was noninferior to meropenem¹
- The phase III CARE study in HABP/VABP reported fewer deaths from day 14 to day 60 with plazomicin-based combination therapy²

Eravacycline

- The phase III IGNITE1 and IGNITE4 studies in cIAls reported eravacycline was noninferior to ertapenem and meropenem, respectively^{3,4}
- Phase III trials of eravacycline vs ertapenem (NCT03032510) and levofloxacin (NCT01978938) for cUTI showed lower cure rates for eravacycline⁵

Murepavadin⁶

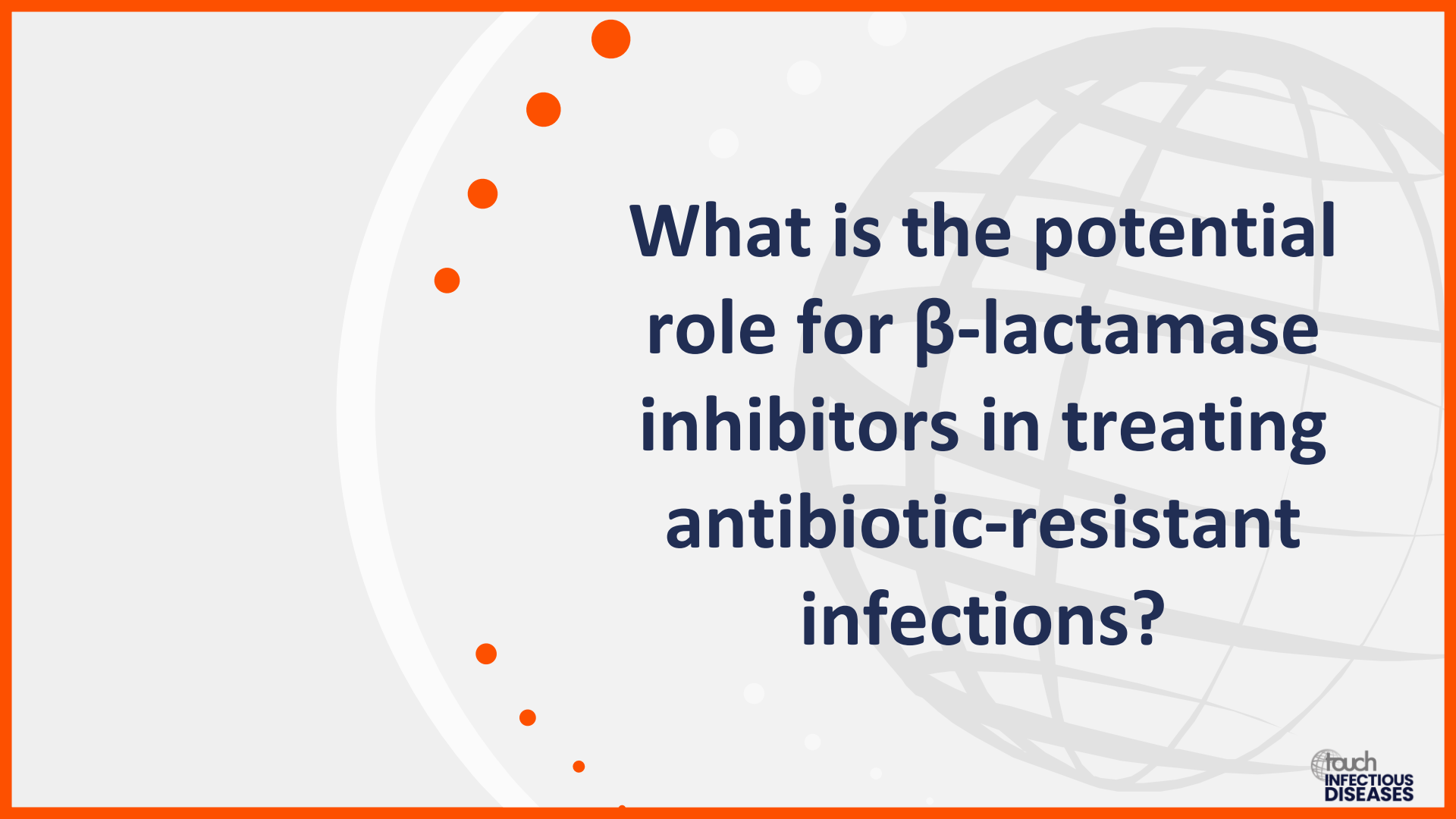
- The phase III PRISM-MDR and PRISM-UDR studies of IV murepavadin halted due to a higher than expected frequency of acute kidney injury
- Development of inhaled murepavadin continues including for *Pseudomonas aeruginosa* infections in people with cystic fibrosis

Colistin⁷

- Broad-spectrum activity against carbapenem-resistant pathogens
- Use is often limited because of nephrotoxicity
- Discrepancy exists between antimicrobial efficacy observed in laboratory testing vs clinical observation

cIAI, complicated intra-abdominal infection; cUTI, complicated urinary tract infection; HABP, hospital-acquired bacterial pneumonia; IV, intravenous; VABP, ventilator-associated bacterial pneumonia.

1. Wagenlehner FME, et al. *N Engl J Med.* 2019;380:729–40;
2. McKinnel JA, et al. *N Engl J Med.* 2019;380:791–3;
3. Solomkin J, et al. *JAMA Surg.* 2017;152:224–32;
4. Solomkin JS, et al. *Clin Infect Dis.* 2019;69:921–9;
5. Yusuf E, et al. *J Clin Med.* 2021;10:1068;
6. Provezani A, et al. *Int J Clin Pharm.* 2020;42:1016–25;
7. Doi Y. *Clin Infect Dis.* 2019;69(Suppl. 7):S565–75.

The background of the slide features a large, faint globe with a grid of latitude and longitude lines. To the left of the globe, there is a vertical line of seven orange dots of varying sizes, arranged in a slightly curved pattern. The overall color scheme is light gray and white, with orange accents.

**What is the potential
role for β -lactamase
inhibitors in treating
antibiotic-resistant
infections?**

Combination therapy with β -lactamase inhibitors can help restore efficacy against MDR infections

cUTIs (including acute pyelonephritis)

Relebactam/imipenem/cilastatin:¹

- Noninferior (at 250 mg and 125 mg relebactam) to imipenem/cilastatin, measured by microbiological response rates

Vaborbactam/meropenem:²

- Noninferior to piperacillin/tazobactam, measured by a composite outcome of complete resolution or improvement of symptoms

Avibactam/ceftazidime:³

- Similar to the best available therapy, measured by clinical cure at the test-of-cure visit

cIAIs

Relebactam/imipenem/cilastatin:⁴

- Noninferior (at 250 mg and 125 mg relebactam) to imipenem/cilastatin, measured by clinical response rates at DCIV

Avibactam/ceftazidime:³

- Clinical cure rate at the test-of-cure visit was higher with avibactam/ceftazidime vs best available therapy

cIAI, complicated intra-abdominal infection; cUTI, complicated urinary tract infection; DCIV, discontinuation of intravenous therapy; MDR, multidrug resistant.

1. Sims M, et al. *J Antimicrob Chemother.* 2017;72:2616–26; 2. Kaye KS, et al. *JAMA.* 2018;319:788–9; 3. Carmeli Y, et al. *Lancet Infect Dis.* 2016;16:661–73;

4. Lucasti C, et al. *Antimicrob Agents Chemother.* 2016;60:6234–43.

Combination therapy with β -lactamase inhibitors can help restore efficacy against MDR infections

HAP and VAP

- **Tazobactam/ceftolozane:**¹
 - Noninferior to meropenem, measured by all-cause mortality at 28 days
 - 25% of patients were infected with *Pseudomonas aeruginosa*
- **Avibactam/ceftazidime:**²
 - Noninferior to meropenem, measured by clinical cure at a test-of-cure visit
 - 30% of patients were infected with *Pseudomonas aeruginosa*
- **Relebactam/imipenem/cilastatin:**³
 - Noninferior to tazobactam/piperacillin, measured by day 28 all-cause mortality and favourable clinical response at early follow-up
 - 18.9% of patients were infected with *Pseudomonas aeruginosa*



**How can clinicians
incorporate new and
emerging therapies into
their daily clinical
practice?**

Key factors for incorporating new and emerging therapies



Newer agents should be used within the context of AMR surveillance based on local epidemiology and the major clinical impact attributable to a specific AMR profile¹



Fast, robust and affordable antimicrobial susceptibility testing methods are in development to decrease the time required²



To combat the development of resistance, newer antibiotics should not be used indiscriminately but targeted at patients with specific therapeutic requirements³

AMR, antimicrobial resistance.

1. Pezzani MD, et al. *J Antimicrob Chemother.* 2020;75:ii2–ii19; 2. Vasala A, et al. *Front Cell Infect Microbiol.* 2020;10:308; 3. Cars O, et al. *Lancet Glob Health.* 2021;9:e1022–7.